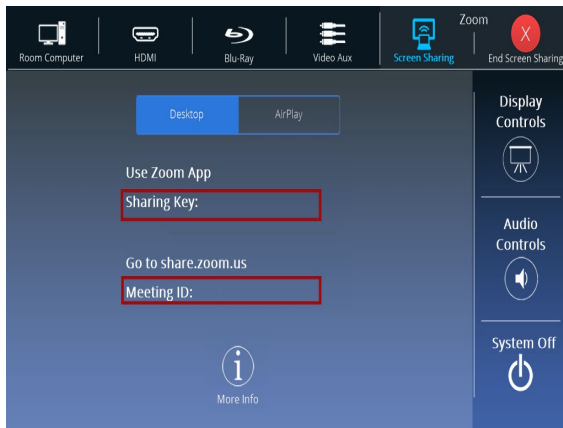


# Wireless Screen Sharing with Zoom

To turn on the projection system, **Press Anywhere to Start** on the touch panel.

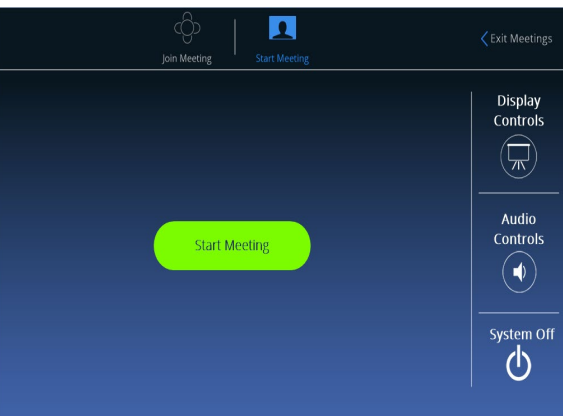
A pop-up will appear notifying you that the projector is warming up.



## Zoom Screen Sharing

- On the touch panel, select **Zoom Screen Sharing**
- On your device, open **Zoom** app \*\*
- Select **Sharing**
- Enter sharing key displayed on screen
- To exit Screen Sharing, tap **Exit Screen Sharing** on top right of touch panel

**AirPlay:** On touch panel, tap **AirPlay** button. On your Apple device select correct room from Screen Mirroring list, **enter code** displayed on touch panel or projected screen.



## Zoom Meeting

**Note:** most classrooms are not currently equipped with a camera. You can request one ahead of time from Classroom Support x3474 or classhelp@smith.edu

- On the touch panel, select **Zoom Meetings**
- On your device, open **Zoom** app\*\*
- You may then **Start** or **Join** a meeting
- To exit Meeting, tap red **Leave** button on touch panel meeting controls

**In Meeting Controls** allow you to control your meeting from the touch panel.

\*\* Download and install the Zoom app at <https://zoom.us/download/>

## Zoom login

- Choose **SSO** (right side)
- Enter **smith** in the domain box
- Click **Continue**
- Login with Smith login credentials

